

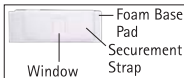
Clik-FIX® Universal Hub / Luer Lock Catheter Securement Device (Adult)

REF LLSK-1021B

DESCRIPTION

The B. Braun Medical Clik-FIX Universal Hub / Luer Lock Catheter Securement

Device (Adult) is an adhesive securement device (ASD) designed to provide securement and stabilization for IV catheters and catheter connections, as well as various medical tubing.



INDICATIONS

The Clik-FIX Universal Hub / Luer Lock Catheter Securement Device (Adult) is intended to stabilize most intravascular catheters with a Luer lock connection, as well as various medical tubing.

CONTRAINDICATIONS

Do not use the device on compromised skin (i.e., open wounds, burns, lesions, rash, or other irritation and/or patients with known tape or adhesive allergies or hypersensitive skin).

ADVERSE REACTIONS

Skin irritation.

WARNING AND PRECAUTIONS

- Follow facility protocol when placing and removing the device. Observe universal precautions.
- Do not use a Clik-FIX device on patients who are allergic to adhesives and on non-adherent skin.
- Do not apply alcohol, acetone, or other liquid agent directly on the Clik-FIX device when in use, as it can weaken the device.
- During application and removal of the Clik-FIX device, take care to minimize manipulation and movement of the catheter.
- Prepare the skin surface according to facility protocol. Remove oil and moisture from application area and allow the area to completely dry.

B. Braun Medical Inc.
Bethlehem, PA 18018-3524 USA
1-800-227-2862

B | BRAUN

- Routinely inspect the Clik-FIX® device, insertion site, and catheter position according to facility protocol and best practice guidelines.
- Replace the Clik-FIX device at least every 7 days or per facility protocol.

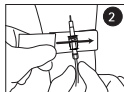
INSTRUCTIONS FOR USE:

1. PREP

Prepare and cleanse insertion site and surrounding securement area according to facility protocol. Allow the area to completely dry. Establish vascular access according to facility protocol or remove previous dressing from catheter.

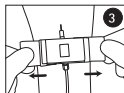
2. PLACE FOAM BASE

After vascular access is established or previous dressing is removed, open the device and carefully slide the foam base pad under the Luer lock connection* / tubing (Figure 2). *If a Luer lock connection is present, secure the Luer lock connection. If no Luer lock connection is present, secure the tubing.



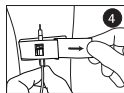
3. REMOVE RELEASE PAPER

Remove the release paper from the underside of the foam base one side at a time (Figure 3). Lightly press down to adhere to skin.



4. PEEL, ALIGN, AND PRESS

Peel release paper off the back of the securement strap while aligning the window over the Luer lock connection / tubing (Figure 4). Lightly press down to adhere.



5. COMPLETE DRESSING

After the Clik-FIX device is adhered to the skin, follow facility protocol for placement of dressing. Date and time per facility protocol.

REMOVAL: Follow your facility's protocol.

Sterile when packaged in a sealed sterile pouch or when included as a component in a sterile kit.



Do not use if package is damaged



Single use

Rx only



Consult Instructions for Use
www.bbraunusa.com

Patent: www.bbraunusa.com/patents

Not made with natural rubber latex or phthalates.

A4809165-2 REV. 2/24