

Clik-FIX® PICC / Central Catheter Securement Device

REF WCSK-1000B
WCSK-1003B

DESCRIPTION - The B. Braun Medical Clik-FIX PICC / Central Catheter Securement Device is an adhesive

securement device (ASD) designed to provide securement and stabilization to peripherally inserted central catheters (PICCs), central catheters, and midline catheters with wings.

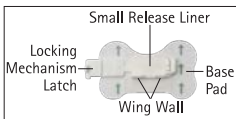
INDICATIONS - The Clik-FIX PICC / Central Catheter Securement Device is intended to stabilize PICCs, central catheters, and midline catheters with wings.

CONTRAINDICATIONS - Do not use the device on compromised skin (i.e., open wounds, burns, lesions, rash, or other irritation and/or patients with known tape or adhesive allergies or hypersensitive skin).

ADVERSE REACTIONS - Skin irritation.

WARNING AND PRECAUTIONS

- Follow facility protocol when placing and removing the device. Observe universal precautions.
- Do not use a Clik-FIX device on patients who are allergic to adhesives and on non-adherent skin.
- Do not apply alcohol, acetone, or other liquid agent directly on the Clik-FIX device when in use, as it can weaken the device.
- During application and removal of the Clik-FIX device, take care to minimize manipulation and movement of the catheter.
- Prepare the skin surface according to facility protocol. Remove oil and moisture from application area and allow the area to completely dry.
- Routinely inspect the Clik-FIX device, insertion site, and catheter position according to facility protocol and best practice guidelines.



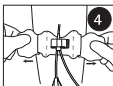
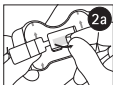
B. Braun Medical Inc.
Bethlehem, PA 18018-3524 USA
1-800-227-2862

B | BRAUN

- Replace the Clik-FIX® device at least every 7 days or per facility protocol.

INSTRUCTIONS FOR USE:

- 1. PREP** - Prepare and cleanse insertion site and surrounding securement area according to facility protocol. Allow the area to completely dry. Establish vascular access according to facility protocol or remove previous dressing from catheter.
- 2. PLACE** - Remove the small release paper from the locking mechanism to expose the slightly tacky adhesive patch (Figure 2a). Orient the Clik-FIX device so the green arrows point towards the insertion site. Carefully place the Clik-FIX device under the wings of the catheter, ensuring that the bottom of the wings are flush with the wing wall (Figure 2b). Lightly press catheter wings to base of device.
- 3. SECURE LATCH** - Support the underside of the device and gently fold the locking mechanism latch over the wings of the catheter, aligning the latch with the slot on the base of the mechanism (Figure 3). Lightly press until you hear a click. You may hear up to 3 clicks depending on the size of the catheter wings.
- 4. PEEL AND PRESS** - Remove the release paper from the underside of the device one side at a time (Figure 4). Lightly press to adhere to the skin.
- 5. COMPLETE DRESSING** - After the Clik-FIX device is adhered to the skin, follow facility protocol for placement of dressing. Date and time per facility protocol.



REMOVAL: Follow your facility's protocol.

Sterile when packaged in a sealed sterile pouch or when included as a component in a sterile kit.



Consult Instructions for Use
www.bbraunusa.com

Patent: www.bbraunusa.com/patents



Single use



Do not use if package is damaged

Not made with

natural rubber latex Rx only
or phthalates.

A4809168-2 REV. 3/24